

DIC-24112



# Table of Contents

English .....	3
Nederlands .....	18
Deutsch.....	30
Français.....	42
Svenska.....	54



DIC-24112

# Table of Contents

<b>1</b>	<b>Safety</b> .....	<b>5</b>
1.1	Installation Safety .....	5
1.2	Operation Safety .....	5
<b>2</b>	<b>Parts description</b> .....	<b>6</b>
2.1	What's in the box.....	6
2.2	Monitor .....	6
2.3	Doorbell .....	6
<b>3</b>	<b>Installation</b> .....	<b>7</b>
<b>4</b>	<b>Basic functions</b> .....	<b>8</b>
4.1	Unlocking your door or gate with a RFID tag.....	8
4.2	Answering a call .....	8
4.2.1	Opening the door/gate .....	8
4.3	Registering RFID tags .....	8
4.3.1	Registering an administrator tag.....	8
4.3.2	Registering a user tag.....	9
4.4	Cancelling a RFID tag.....	9
4.5	Cancelling all RFID tags .....	9
<b>5</b>	<b>Home screen and menus</b> .....	<b>10</b>
5.1	Monitor menu.....	10
5.2	Intercom menu .....	10
5.3	Recording playback menu.....	11
5.4	Photo menu .....	11
5.5	Settings menu .....	11
5.5.1	Select photos or video recordings.....	11
5.5.2	Video duration .....	12
5.5.3	Number of photos.....	12
5.5.4	Image settings .....	12
5.5.5	Ringtone and volume .....	12
5.5.6	Date and time settings .....	12
5.5.7	Formatting MicroSD card .....	12
5.5.8	Customer service information.....	12
5.6	Power off .....	12
<b>6</b>	<b>Cleaning and maintenance</b> .....	<b>13</b>
<b>7</b>	<b>Frequently asked questions</b> .....	<b>14</b>
<b>8</b>	<b>Specifications</b> .....	<b>15</b>
<b>9</b>	<b>Environment</b> .....	<b>16</b>
<b>10</b>	<b>Declaration of Conformity</b> .....	<b>17</b>

# 1 Safety

1. Please read these instructions carefully before installing and using the product.
2. Do not cut the power supply cable to extend it; the device (transformer) will not work with a longer cable. Do not plug in the device until all the wiring has been finished.

## 1.1 Installation Safety

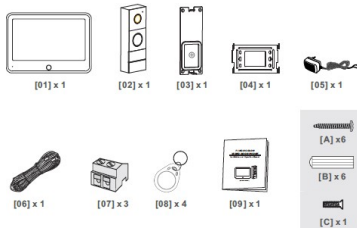
1. Keep children and bystanders away while installing the products. Distractions can cause you to lose control.
2. Do not overreach when installing this product. Keep proper footing and balance at all times. This enables better control in unexpected situations.
3. This product is not a toy. Mount it out of reach of children.

## 1.2 Operation Safety

1. Do not operate electrically powered products in explosive atmospheres, such as in the presence of flammable liquids, gases, or dust. Electrically powered products create sparks which may ignite the dust or fumes.
2. The warnings, precautions, and instructions discussed in this instruction manual cannot cover all possible conditions and situations that may occur. It must be understood by the operator that common sense and caution are factors which cannot be built into this product, but must be supplied by the operator.
3. Do not expose the Power Adapter of this product to rain or wet conditions. Water entering the Power Adapter will increase the risk of electric shock.
4. Do not abuse the Power Cord. Never use the cord for unplugging the plug from the outlet. Keep cord away from heat, oil, sharp edges or moving parts. Damaged or entangled cords increase the risk of electric shock.
5. The adapter must match the outlet. Never modify the plug in any way. Unmodified plugs and matching outlets will reduce risk of electric shock.

## 2 Parts description

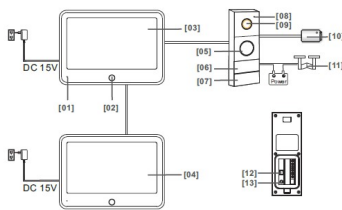
### 2.1 What's in the box



#### Monitor

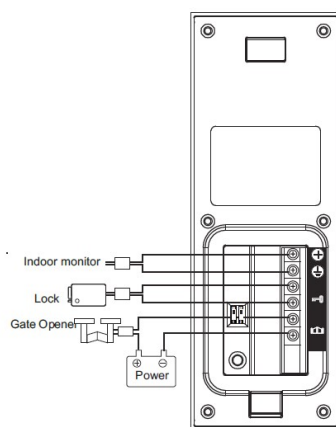
1. Doorbell
2. Mount
3. Mount
4. AC adapter
5. Cables
6. Terminal block
7. RFID tags (x 4)
8. Instruction manual
9. Screws and plugs

### 2.2 Monitor



1. Microphone
2. Home button
3. Touchscreen
4. MicroSD card slot

### 2.3 Doorbell



#### Camera

1. Speaker
2. Call button
3. RFID sensor
4. Lock release time switch
5. Doorlock / gate switch
6. Register button

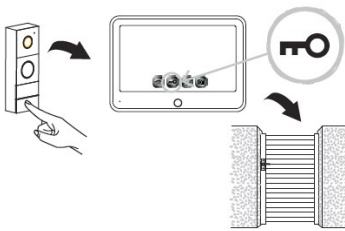
# 3 Installation

## 4 Basic functions

### 4.1 Unlocking your door or gate with a RFID tag

- ✓ You have connected an electric strike or gate opener to your doorbell.
- ✓ You have set the gate / lock switch to the correct position for your situation.
- a) To unlock your door or gate, simply swipe your administrator or user tag across the RFID sensor on your doorbell.
- ⇒ Your door or gate will now unlock within the time period you set using the lock release time switch.

### 4.2 Answering a call



When a visitor rings your doorbell, you have several options.

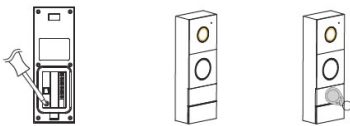
- ✓ A visitor rings your doorbell.
- ✓ Your monitor(s) will turn on, giving you a live view from the doorbell's camera.
- ✓ Use the onscreen buttons to:
  - a) Press the gate button to unlock the gate.
  - b) Press the lock button to unlock your door.
  - c) Press the talk button to talk to your visitor.
  - d) Press the camera button to take a video or picture.

#### 4.2.1 Opening the door/gate

### 4.3 Registering RFID tags

Note: When using the product for the first time, it is not necessary to register the administrator tags. The tags have already been registered in the factory. It is only possible to register 2 administrator tags at a time.

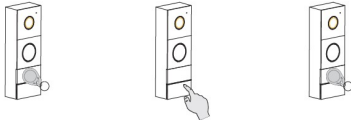
#### 4.3.1 Registering an administrator tag



- ✓ You have an unregistered administrator tag.
- ✓ Your doorbell is unplugged.
- ✓ You have a small screwdriver ready to press the registration button.
  - a) Press and hold the registration button.
  - b) Plug in the adapter to power on your doorbell.
    - ⇒ The LED will flash red.
  - c) Swipe the unregistered management tag across the RFID sensor on the doorbell.
- ⇒ The device will beep several times to indicate your administrator tag has been registered.

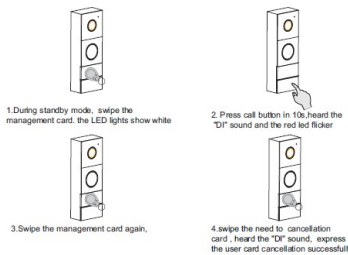


### 4.3.2 Registering a user tag



- ✓ Your doorbell is in standby mode.
  - ✓ You have a registered administrator tag.
  - ✓ You have a unregistered user tag.
- a) Swipe your administrator tag across the RFID sensor on your doorbell.
  - b) Within 10 seconds, press the call button.
    - ⇒ The LED will flash red, and the device will beep.
  - c) Now swipe the unregistered user tag across the RFID sensor on your doorbell.
    - ⇒ The device will beep several times to indicate your tag has been registered.

### 4.4 Cancelling a RFID tag



- ✓ The doorbell is in standby mode.
  - ✓ You have an administrator tag ready, and a tag that needs to be cancelled.
- a) Swipe the administrator tag. The LED will light up white.
  - b) Within 10 seconds, press the call button. You will hear a beep, and the LED will start flashing red.
  - c) Swipe the administrator tag again.
  - d) Now swipe the tag that you want to cancel. The device will beep to indicate that the card has been unpaired.

### 4.5 Cancelling all RFID tags



You wish to cancel all RFID tags.

- ✓ You have an administrator tag ready.
  - ✓ Your doorbell is in standby mode.
- a) Press and hold the call button on your doorbell for 3 seconds.
    - ⇒ You will hear a beep sound, and the LED ring will light up red.
  - b) Swipe the administrator tag on the RFID sensor.
    - ⇒ The doorbell will start beeping at a regular interval.
  - c) Press and hold the call button until you hear a beep sound.
    - ⇒ All your RFID tags are now cancelled.

## 5 Home screen and menus

- Press the home button on the monitor to open the home screen. The screen will turn on, and you can view the home screen.

The home screen allows you to access the following menus:

1. Time/date
2. Monitor menu
3. Intercom menu
4. Playback recordings menu
5. Photo menu
6. Settings menu
7. Power off

### 5.1 Monitor menu

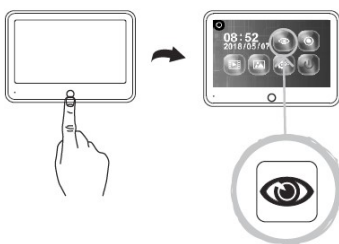


Illustration 1: Monitor menu

- a) Open the monitor menu from the homescreen to check the live footage from the doorbell camera.
- b) Press the gate icon to open your gate.
- c) Press the lock icon to open your lock.
- d) Press the home button to exit the menu and go back to the homescreen.

### 5.2 Intercom menu

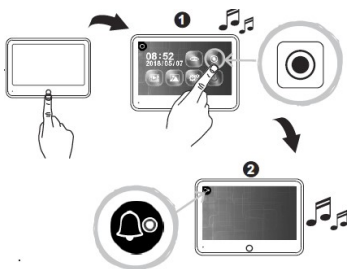


Illustration 2: Intercom menu

- ✓ You need 2 monitors to use this function.
- a) Open the intercom menu from the homescreen on one of your monitors.
    - ⇒ The other monitor will start chiming.
  - b) Press the answer icon in the top right corner of the screen of the second monitor to accept the call.
    - ⇒ You will now be able to talk to another person from one monitor to the other.
  - c) Press the end call icon in the top right corner on one of the monitors to end the call.

## 5.3 Recording playback menu

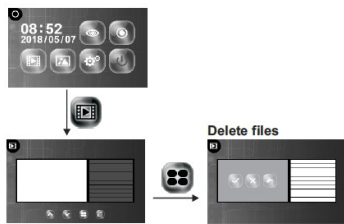


Illustration 3: Recording playback menu

✓ You have made recordings.

- a) Open the playback menu from the homescreen.
- b) Use the onscreen arrow buttons to scroll through your recordings.
- c) Use the onscreen controls to review or delete your recorded footage.

## 5.4 Photo menu

## 5.5 Settings menu



Illustration 4: Settings menu

1. Select photos or videorecordings
2. Video duration
3. Number of photos
4. Image settings
5. Ringtone and volume settings
6. Date and time settings
7. Customer service information

### 5.5.1 Select photos or video recordings

You can choose if your intercom takes photos or video recordings of your visitors.

- Tap on the video icon to select video recordings
- Tap on the photo icon to select photos.

5.5.2 Video duration

5.5.3 Number of photos

5.5.4 Image settings

5.5.5 Ringtone and volume

5.5.6 Date and time settings

5.5.7 Formatting MicroSD card

5.5.8 Customer service information

5.6 Power off

# 6 Cleaning and maintenance

## 7 Frequently asked questions

Problem	Solution
<ul style="list-style-type: none"> <li>– Monitor does not switch on.</li> </ul>	<ul style="list-style-type: none"> <li>– Make sure that the monitor is connected to the power source.</li> <li>– Do not use extension cords, as the voltage might not be sufficient to power on the device.</li> </ul>
<ul style="list-style-type: none"> <li>– Monitor is switched on but no image is displayed.</li> <li>– The picture quality is not good.</li> </ul>	<ul style="list-style-type: none"> <li>– Check the wire connections between the outdoor unit and the monitor (including the correct polarity).</li> <li>– Adjust brightness and contrast in settings menu.</li> <li>– Make sure there is no direct light source pointed at the monitor.</li> </ul>
<ul style="list-style-type: none"> <li>– The volume is too low.</li> </ul>	<ul style="list-style-type: none"> <li>– Adjust the volume</li> </ul>
<ul style="list-style-type: none"> <li>– Connected gate opener does not work.</li> </ul>	<ul style="list-style-type: none"> <li>– Test the installation and the 12 V relay using wired control. Refer to the instruction manual of the gate opener.</li> </ul>
<ul style="list-style-type: none"> <li>– Connected gate opener and electric strike does not work.</li> </ul>	<ul style="list-style-type: none"> <li>– Use suitable accessories with 12 V, 500 mA specification. Only install lock having a mechanical storage system.</li> </ul>
<ul style="list-style-type: none"> <li>– Video and audio signal is too weak or with interference</li> </ul>	<ul style="list-style-type: none"> <li>– The monitor is installed too close to other electronic devices. Move other electrical devices away.</li> <li>– Please check the distance between indoor unit with outdoor unit, and also check the thickness of the cables used,</li> </ul>
<ul style="list-style-type: none"> <li>– There is no sound coming from the outdoor unit.</li> </ul>	<ul style="list-style-type: none"> <li>– The microphone might be obstructed or stained. Clean it carefully with a soft moistened cloth.</li> </ul>

## 8 Specifications

### Monitor

Screen size	7"(Diagonal) inch
Color Configuration	R.G.B.delta
Video System	PAL/NTSC
Effective Pixels	800X3(RGB)X480
Consumption Current	450±200mA
Operation Temperature	-10℃ ~ +50℃
Operation Humidity	85%(Max)
Supply Voltage	DC 15V 1A

### Doorbell

Imaging Sensor Type	1/4"CMOS
View Angle	about 100o
Minimum Illumination	0Lux
Night vision distance	0.5 ~ 1m
Operating Temperature	-10℃ ~ +50℃
Operating Humidity	≤85%RH

## 9 Environment



This appliance should not be put into the domestic garbage at the end of its durability, but must be offered at a central point for the recycling of electric and electronic domestic appliances. This symbol on the appliance, instruction manual and packaging puts your attention to this important issue. The materials used in this appliance can be recycled. By recycling of used domestic appliances you contribute an important push to the protection of our environment. Ask your local authorities for information regarding the point of recollection.

### Support

You can find all available information and spare parts at [www.smartwares.eu](http://www.smartwares.eu)

Please read manual before use, and store it carefully for future use and maintenance.



## 10 Declaration of Conformity

Hereby, Smartwares Europe declares that the radio equipment type DIC-22815 is in compliance with Directive 2014/53/EU

The full text of the EU declaration of conformity is available at the following internet address: [www.smartwares.eu/doc](http://www.smartwares.eu/doc)



<b>1</b>	.....	<b>20</b>
1.1	.....	20
1.2	.....	20
<b>2</b>	.....	<b>21</b>
2.1	.....	21
2.2	.....	21
2.3	.....	21
<b>3</b>	.....	<b>22</b>
<b>4</b>	.....	<b>23</b>
4.1	.....	23
4.2	.....	23
4.2.1	.....	23
4.3	.....	23
4.3.1	.....	23
4.3.2	.....	23
4.4	.....	23
4.5	.....	23
<b>5</b>	.....	<b>24</b>
5.1	.....	24
5.2	.....	24
5.3	.....	24
5.4	.....	24
5.5	.....	24
5.5.1	.....	24
5.5.2	.....	24
5.5.3	.....	24
5.5.4	.....	24
5.5.5	.....	24
5.5.6	.....	24
5.5.7	.....	24
5.5.8	.....	24
5.6	.....	24
<b>6</b>	.....	<b>25</b>
<b>7</b>	.....	<b>26</b>
<b>8</b>	.....	<b>27</b>
<b>9 Milieu</b>	.....	<b>28</b>
<b>10 Conformiteitsverklaring</b>	.....	<b>29</b>

1

1.1

1.2

2

2.1

2.2

2.3

# 3

4

4.1

4.2

4.2.1

4.3

4.3.1

4.3.2

4.4

4.5

5

5.1

5.2

5.3

5.4

5.5

5.5.1

5.5.2

5.5.3

5.5.4

5.5.5

5.5.6

5.5.7

5.5.8

5.6



# 6

# 7

---

# 8

## 9 Milieu



■ Dit apparaat mag aan het einde van de levensduur niet bij het normale huisafval worden gedeponerd, maar moet bij een speciaal inzamelpunt voor hergebruik van elektrische en elektronische apparaten worden aangeboden. Het symbool op het apparaat, in de gebruiksaanwijzing en op de verpakking attendeert u hierop. De in het apparaat gebruikte materialen kunnen worden gerecycled. Met het recyclen van gebruikte huishoudelijke apparaten levert u een belangrijke bijdrage aan de bescherming van ons milieu. Informeer bij uw lokale overheid naar het inzamelpunt.

### Support

Alle beschikbare informatie en reserveonderdelen vindt u op [www.smartwares.eu](http://www.smartwares.eu)

Lees voor gebruik de handleiding en bewaar deze zorgvuldig voor toekomstig gebruik en het uitvoeren van onderhoudswerkzaamheden.

## 10 Conformiteitsverklaring

Hierbij verklaart, Smartwares Europe dat het type radioapparatuur DIC-22815 conform is met Richtlijn 2014/53/EU.

De volledige tekst van de EU-conformiteitsverklaring kan worden geraadpleegd op het volgende internetadres: [www.smartwares.eu/doc](http://www.smartwares.eu/doc)



<b>1</b>	.....	<b>32</b>
1.1	.....	32
1.2	.....	32
<b>2</b>	.....	<b>33</b>
2.1	.....	33
2.2	.....	33
2.3	.....	33
<b>3</b>	.....	<b>34</b>
<b>4</b>	.....	<b>35</b>
4.1	.....	35
4.2	.....	35
4.2.1	.....	35
4.3	.....	35
4.3.1	.....	35
4.3.2	.....	35
4.4	.....	35
4.5	.....	35
<b>5</b>	.....	<b>36</b>
5.1	.....	36
5.2	.....	36
5.3	.....	36
5.4	.....	36
5.5	.....	36
5.5.1	.....	36
5.5.2	.....	36
5.5.3	.....	36
5.5.4	.....	36
5.5.5	.....	36
5.5.6	.....	36
5.5.7	.....	36
5.5.8	.....	36
5.6	.....	36
<b>6</b>	.....	<b>37</b>
<b>7</b>	.....	<b>38</b>
<b>8</b>	.....	<b>39</b>
<b>9 Umwelt</b>	.....	<b>40</b>
<b>10 Konformitätserklärung</b>	.....	<b>41</b>

1

1.1

1.2



2

2.1

2.2

2.3

# 3

4

4.1

4.2

4.2.1

4.3

4.3.1

4.3.2

4.4

4.5

5

5.1

5.2

5.3

5.4

5.5

5.5.1

5.5.2

5.5.3

5.5.4

5.5.5

5.5.6

5.5.7

5.5.8

5.6

# 6

# 7

---

# 8

## 9 Umwelt



Dieses Gerät darf am Ende seiner Lebenszeit nicht im Hausmüll entsorgt werden, sondern muss an einer Sammelstelle für das Recyceln von elektrischen und elektronischen Haushaltsgeräten abgegeben werden. Das Symbol auf dem Gerät, in der Bedienungsanleitung und auf der Verpackung macht Sie auf dieses wichtige Thema aufmerksam. Die in diesem Gerät verwendeten Materialien können recycelt werden. Durch das Recyceln gebrauchter Haushaltsgeräte leisten Sie einen wichtigen Beitrag zum Umweltschutz. Fragen Sie Ihre örtliche Behörde nach Informationen über eine Sammelstelle.

### Support

Sämtliche verfügbaren Informationen und Ersatzteile finden Sie unter [www.smartwares.eu](http://www.smartwares.eu).

Lesen Sie die Anleitung vor dem Gebrauch vollständig durch. Heben Sie die Anleitung zum späteren Nachschlagen und zu Wartungszwecken auf.



# 10 Konformitätserklärung

Hiermit erklärt Smartwares Europe dass der Funkanlagentyp DIC-22815 der Richtlinie 2014/53/EU entspricht.

Der vollständige Text der EU-Konformitätserklärung ist unter der folgenden Internetadresse verfügbar: [www.smartwares.eu/doc](http://www.smartwares.eu/doc)



<b>1</b>	.....	<b>44</b>
1.1	.....	44
1.2	.....	44
<b>2</b>	.....	<b>45</b>
2.1	.....	45
2.2	.....	45
2.3	.....	45
<b>3</b>	.....	<b>46</b>
<b>4</b>	.....	<b>47</b>
4.1	.....	47
4.2	.....	47
4.2.1	.....	47
4.3	.....	47
4.3.1	.....	47
4.3.2	.....	47
4.4	.....	47
4.5	.....	47
<b>5</b>	.....	<b>48</b>
5.1	.....	48
5.2	.....	48
5.3	.....	48
5.4	.....	48
5.5	.....	48
5.5.1	.....	48
5.5.2	.....	48
5.5.3	.....	48
5.5.4	.....	48
5.5.5	.....	48
5.5.6	.....	48
5.5.7	.....	48
5.5.8	.....	48
5.6	.....	48
<b>6</b>	.....	<b>49</b>
<b>7</b>	.....	<b>50</b>
<b>8</b>	.....	<b>51</b>
<b>9 Environnement</b>	.....	<b>52</b>
<b>10 Déclaration de conformité</b>	.....	<b>53</b>

1

1.1

1.2

2

2.1

2.2

2.3

# 3

4

4.1

4.2

4.2.1

4.3

4.3.1

4.3.2

4.4

4.5

5

5.1

5.2

5.3

5.4

5.5

5.5.1

5.5.2

5.5.3

5.5.4

5.5.5

5.5.6

5.5.7

5.5.8

5.6



# 6

# 7

---

# 8

## 9 Environnement



Cet appareil ne doit pas être jeté avec les déchets ménagers à la fin de sa durée de vie, il doit être remis à un centre de recyclage pour les appareils électriques et électroniques. Ce symbole sur l'appareil, le manuel d'utilisation et l'emballage attire votre attention sur un point important. Les matériaux utilisés dans cet appareil sont recyclables. En recyclant vos appareils, vous contribuez de manière significative à la protection de notre environnement. Renseignez-vous auprès des autorités locales pour connaître les centres de collecte des déchets.

### Support

Vous retrouvez toutes les informations et pièces de rechange sur [www.smartwares.eu](http://www.smartwares.eu)  
Veuillez lire le manuel avant usage et le ranger soigneusement pour son usage ultérieur et la maintenance.

## 10 Déclaration de conformité

Le soussigné, Smartwares Europe déclare que l'équipement radioélectrique du type DIC-22815 est conforme à la directive 2014/53/UE.

Le texte complet de la déclaration UE de conformité est disponible à l'adresse internet suivante: [www.smartwares.eu/doc](http://www.smartwares.eu/doc)



<b>1</b>	.....	<b>56</b>
1.1	.....	56
1.2	.....	56
<b>2</b>	.....	<b>57</b>
2.1	.....	57
2.2	.....	57
2.3	.....	57
<b>3</b>	.....	<b>58</b>
<b>4</b>	.....	<b>59</b>
4.1	.....	59
4.2	.....	59
4.2.1	.....	59
4.3	.....	59
4.3.1	.....	59
4.3.2	.....	59
4.4	.....	59
4.5	.....	59
<b>5</b>	.....	<b>60</b>
5.1	.....	60
5.2	.....	60
5.3	.....	60
5.4	.....	60
5.5	.....	60
5.5.1	.....	60
5.5.2	.....	60
5.5.3	.....	60
5.5.4	.....	60
5.5.5	.....	60
5.5.6	.....	60
5.5.7	.....	60
5.5.8	.....	60
5.6	.....	60
<b>6</b>	.....	<b>61</b>
<b>7</b>	.....	<b>62</b>
<b>8</b>	.....	<b>63</b>
<b>9 Omgivning</b>	.....	<b>64</b>
<b>10 Försäkran om överensstämmelse</b>	.....	<b>65</b>

1

1.1

1.2



2

2.1

2.2

2.3

# 3

4

4.1

4.2

4.2.1

4.3

4.3.1

4.3.2

4.4

4.5

5

5.1

5.2

5.3

5.4

5.5

5.5.1

5.5.2

5.5.3

5.5.4

5.5.5

5.5.6

5.5.7

5.5.8

5.6

# 6

# 7

---

# 8

## 9 Omgivning



Denna apparat ska ej slängas bland vanligt hushållsavfall när den slutat fungera. Den ska slängas vid en återvinningsstation för elektriskt och elektroniskt hushållsavfall. Denna symbol på apparaten, bruksanvisningen och förpackningen gör dig uppmärksam på detta. Materialen som används i denna apparat kan återvinnas. Genom att återvinna hushållsapparater gör du en viktig insats för att skydda vår miljö. Fråga de lokala myndigheterna var det finns insamlingsställen.

### Support

Du hittar all tillgänglig information och reservdelar på [www.smartwares.eu](http://www.smartwares.eu)

Läs bruksanvisningen före användning och spar den för framtida användning samt underhåll.



## 10 Försäkran om överensstämmelse

Härmed försäkras Smartwares Europe att denna typ av radioutrustning DIC-22815 överensstämmer med direktiv 2014/53/EU.

Den fullständiga texten till EU-försäkran om överensstämmelse finns på följande webbadress: [www.smartwares.eu/doc](http://www.smartwares.eu/doc)





