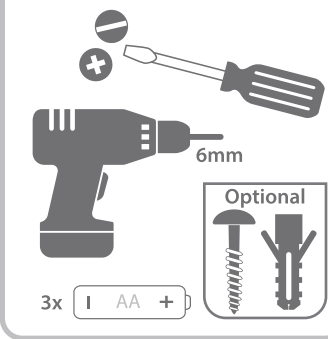
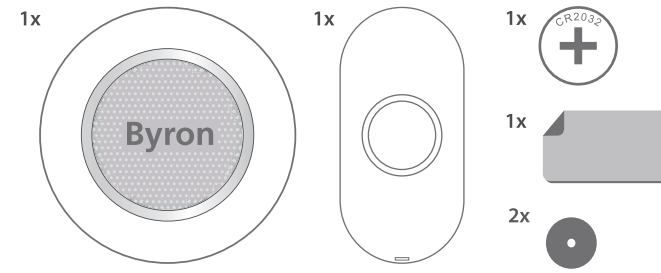


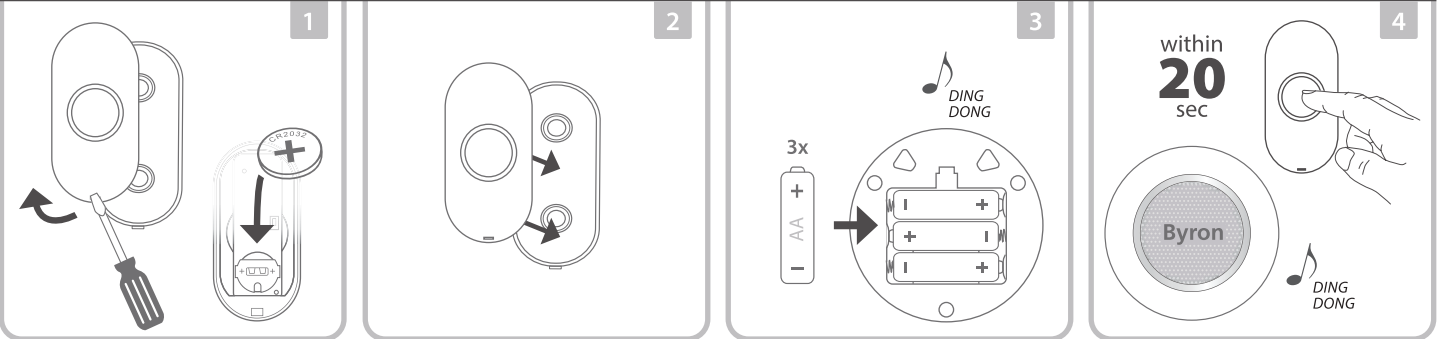
NEEDED TO START (EXCL.)



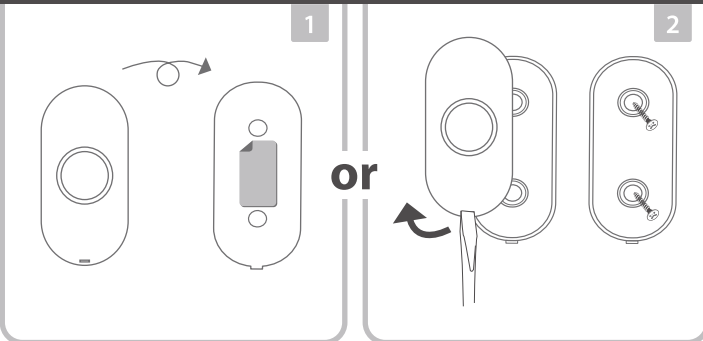
BOX CONTENT | INHALT | CONTENUS | INHOUD DOOS | CONTENUTO | CONTENIDO DE LA CAJA



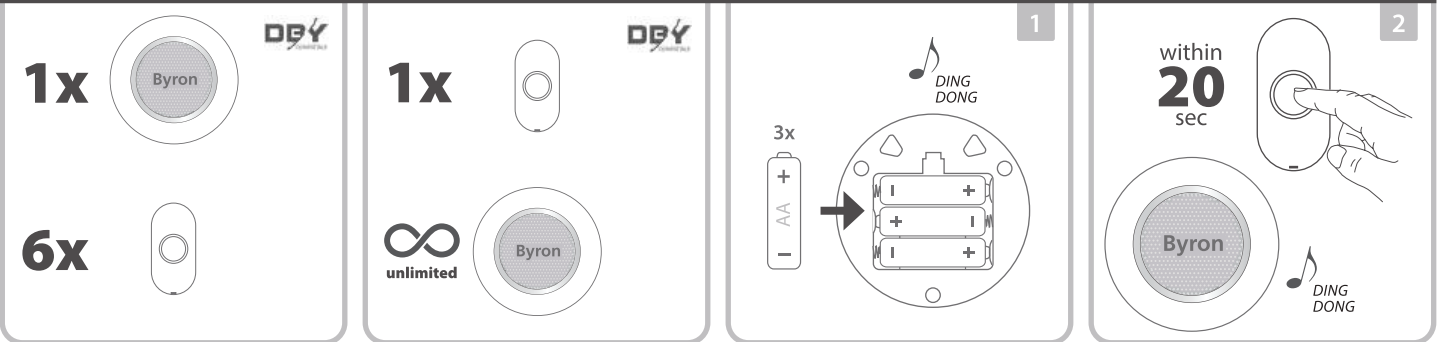
FIRST SET-UP | ERSTEINRICHTUNG | PREMIÈRE CONFIGURATION | EERSTE INSTALLATIE | PRIMO SET-UP | PRIMERA CONFIGURACIÓN



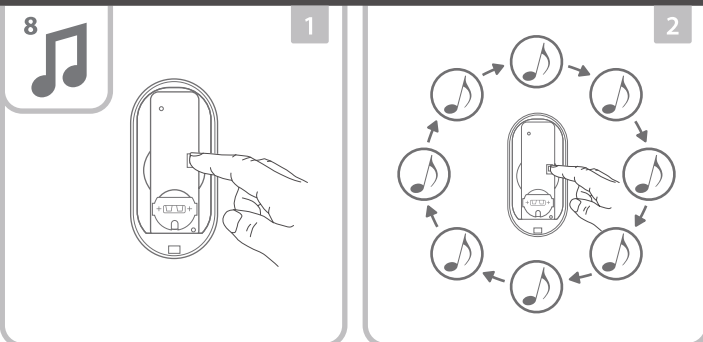
INSTALLATION | INSTALLATION | INSTALLATION | INSTALLATIE | INSTALLAZIONE | INSTALACIÓN



PAIRING MULTIPLE CHIMES | KOPPELN MEHRERER KLINGELN | JUMELAGE DE PLUSIEURS CARILLONS | MEERDERE DEURBELLEN KOPPELEN | ACCOPPIAMENTO MULTIPLIO | EMPAREJANDO MÚLTIPLES TIMBRES



FEATURES | EIGENSCHAFTEN | CARACTÉRISTIQUES | KENMERKEN | CARATTERISTICHE | CARACTERÍSTICAS



<p>1</p>	<p>2</p>	<p>1</p>	<p>2</p>
<p>1</p> <p>1x</p> <p>1x / 3hr</p>	<p>2</p> <p>2x</p> <p>2x / 6hr</p>	<p>3</p> <p>3x</p> <p>3x / 9hr</p>	<p>4</p> <p>4x</p> <p>4x / 12hr</p>

OPTIONAL

Adapter 5V - 2A | Micro USB

<p>1</p>	<p>2</p>	<p>3</p>	<p>WARNING: DO NOT INSERT BATTERIES WHILE POWERED UP BY USB</p>
----------	----------	----------	---

TROUBLESHOOTING | FEHLERBEHEBUNG | RÉOLUTION DE PROBLÈMES | PROBLEEM OPLOSSEN | RISOLUZIONE DEI PROBLEMI | SOLUCIÓN DE PROBLEMAS

<p>RESET</p> <p>1</p> <p>DING DONG</p>	<p>2</p> <p>within 20 sec.</p> <p>DING DONG</p>	<p>3</p> <p>FIRST SET-UP ERSTEINRICHTUNG PREMIÈRE CONFIGURATION EERSTE INSTALLATIE PRIMO SET-UP PRIMERA CONFIGURACIÓN</p> <p>3 and 4</p>	<p>RECHARGEABLE</p> <p>ZINK/ZINC</p> <p>ALKALINE</p> <p>LITHIUM</p>
--	---	--	---

WWW.CHBYRON.EU



Or contact us directly:

EU address:	UK address:
smartwares Europe Jules Verneweg 87 5015 BH Tilburg The Netherlands www.chbyron.eu	smartwares Safety and Lighting Ltd. Meriden House, 6 Great Cornbow Halesowen, West Midlands, B63 3AB United Kingdom

Frequency band: 433.92MHz (433.050 - 434.790 MHz)
 Maximum radio-frequency power: +5.92dB
 Range: 175 meters

Wireless Doorbell DBY-23511
 Power: 3 x 'AA'/LR6 1.5V: Total 4.5V
 Indoor Use Only

Push button - DBY-23510
 Power supply: 1 x CR2032 3V
 IP44 Weather Resistant



Find us on



Conforms to all relevant European Directives.